

Thermic 5.1H



CHARACTERISTICS

- Three ceramic coated pistons, brass axial pump head with built-in by-pass valve. • Suction and delivery Stainless steel valves. 5 hp **Honda** GP 160 unleaded gasoline engine. • Manual start • Integrated detergent suction with external suction probe. • Pressure regulator. • Glycerine pressure gauge. • Hose reel **(optional)**. • Suction hose with check valve **(optional)**. • Steel frame. • Hose holder. • 3,1 l gasoline tank.

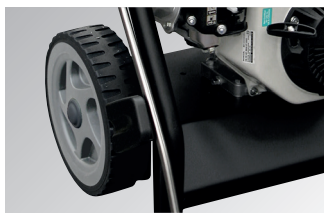
TECHNICAL DATA

	Thermic 5.1H
code	36113-00077
rated/max pressure	160/180 bar - 2320/2610 psi
max delivery flow rate	570 l/h - 2.51 gpm
engine type	Honda GP 160
motor power	5 hp
pump model	BXD/3400 rpm
T max water inlet	40°C
dimension (cm)/weight	70x59x97/37 Kg (81 lbs)

PLUS



Linear self-priming pump with three ceramic coated pistons and brass head



Sturdy painted steel frame with rear wheels and anti-vibration front foot for stable positioning, handle with ergonomic handle for easy movement on any type of surface






Side support for lance and gun housing




Honda GP 160 petrol engine 5 hp

STANDARD EQUIPMENT

 <ul style="list-style-type: none"> • 00080-01701 Gun M22 - 3/8. 	 <ul style="list-style-type: none"> • 00080-01724 Lance M22 high/low pressure 	 <ul style="list-style-type: none"> • 00080-03186 Nozzle type 035 	 <ul style="list-style-type: none"> • 00080-02254 High pressure hose 8 m 	
--	---	---	--	--

OPTIONAL

<ul style="list-style-type: none"> • 10001-10200 High-pressure hose reel (hose not included) 	 <ul style="list-style-type: none"> • 10002-12275 Suction hose with check valve 	<ul style="list-style-type: none"> • 00080-02254 8 m High pressure hose - 3/8" M22 - Ø 1/4" - 210 bar 	<ul style="list-style-type: none"> • 00080-02261 20 m High pressure hose - 3/8" - Ø 5/16" - 400 bar 	<ul style="list-style-type: none"> • 00080-02957 Sandblasting lance
---	---	--	--	--